

# 挤出型橡胶护舷

## Extruded Rubber Fenders

方型和D型护舷广泛应用拖船、工作船以及小型框架式码头。  
底部宽度尺寸较小，安装、维修方便。

Extruded fenders are suitable for frame dock, tugs and other workboats;

Smaller bottom width, Easy for installation and maintenance.

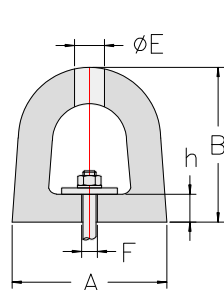
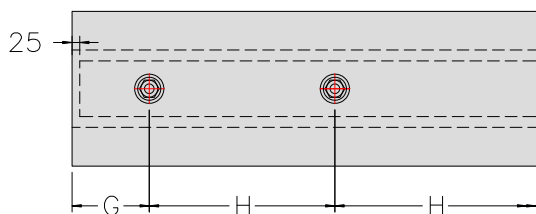


# D型护舷

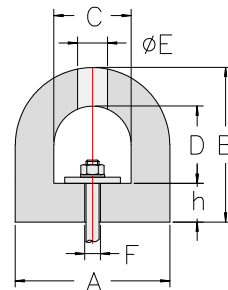
D-Fenders



## 护舷规格 Specification



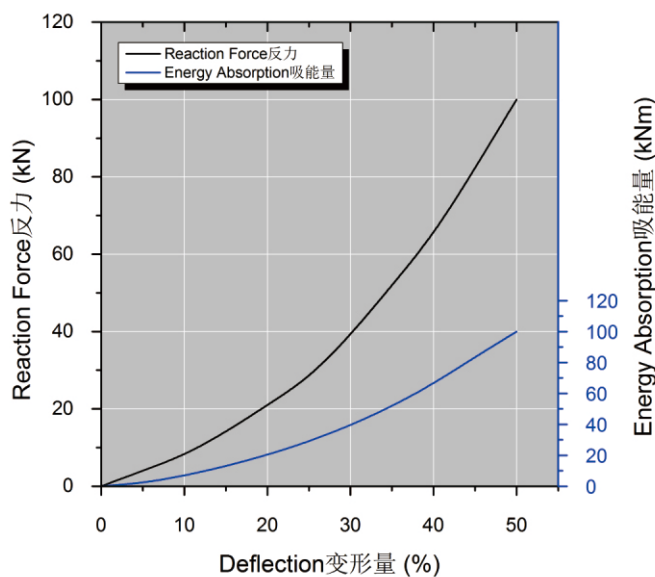
D-series



DD-series

规格 Specification	A	B	C	D	h	ΦE	ΦF	G	H	压板 Flat bar	螺栓 Bolt size	重量 Weight
DD100	100	100	50	50	25	40	20	100-150	200-300	40×8	M16	8.7
DD150	150	150	75	75	37.5	50	25	100-150	200-400	60×10	M20	19.6
DD200	200	200	100	115*	35*	60	30	100-150	300-500	80×14	M24	32.9
DD200	200	200	100	100	50	60	30	100-150	300-500	80×14	M24	34.8
DD250	250	250	125	125	62.5	65	33	100-200	300-500	90×14	M27	54.4
DD300	300	300	150	185*	40*	65	35	100-200	300-600	110×16	M30	72
DD300	300	300	150	150	75	65	35	100-200	300-600	110×16	M30	78
D360	360	300	-	-	40	65	35	100-200	300-600	120×16	M30	85
DD350	350	350	175	175	87.5	80	38	100-250	300-600	130×16	M33	107
DD400	400	400	200	245*	55*	80	40	100-250	300-600	135×18	M36	128
DD400	400	400	200	200	100	80	40	100-250	300-600	150×16	M36	140
D500	500	500	-	-	90	95	45	100-250	400-600	160×20	M42	196
DD500	500	500	250	250	250	95	45	100-250	400-600	180×20	M42	218

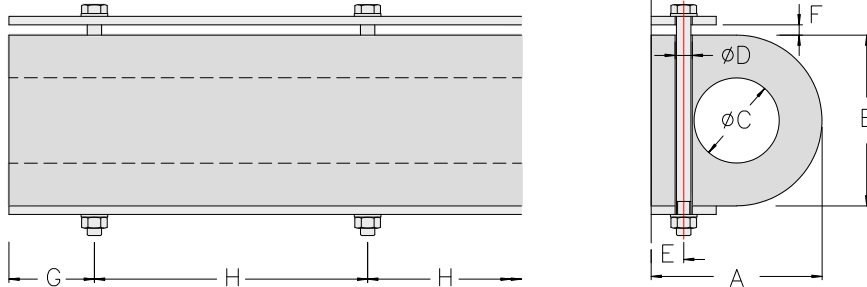
[Units: mm, kg/m]



规格 Specification	反力 R	吸能量 E
DD100	77	1.4
DD150	115	3.2
DD200	150	5.7
DD250	191	8.8
DD300	230	12.9
D300×360	324	14
DD350	268	17.6
DD400	306	23
D500	418	31
DD500	383	35.9

[Units: kN, kNm]

## 护舷规格 Specification

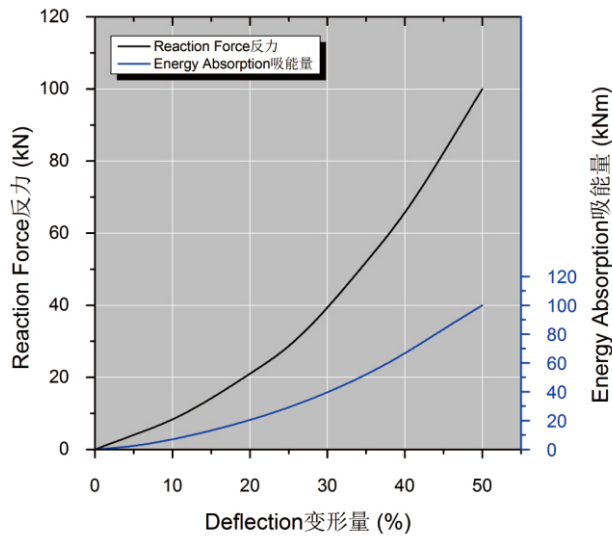


规格 Specification	A	B	ΦC	ΦD	E	F	G	H	压板 Flat bar	螺栓 Bolt size	重量 Weight
DC100	100	100	30	20	25	10	100-150	200-300	50×6	M16	10.7
DC150	150	150	65	27	30	12	100-150	200-400	60×8	M20	21.8
DC200	200	200	75	30	35	15	100-150	300-500	80×10	M24	40.7
DC250	250	250	100	33	45	20	100-200	300-500	100×12	M27	62.3
DC300	300	300	125	36	55	25	100-200	300-600	110×12	M30	89
DC350	350	350	150	40	65	25	100-250	300-600	120×12	M30	119
DC400	400	400	200	45	75	30	100-250	300-600	130×16	M36	145
DC500	500	500	250	50	95	30	100-250	400-600	130×16	M42	226

[Units: mm, kg/m]

注 上述表格中的数字仅供参考，最终图纸应根据客户提供的详细资料而设计。

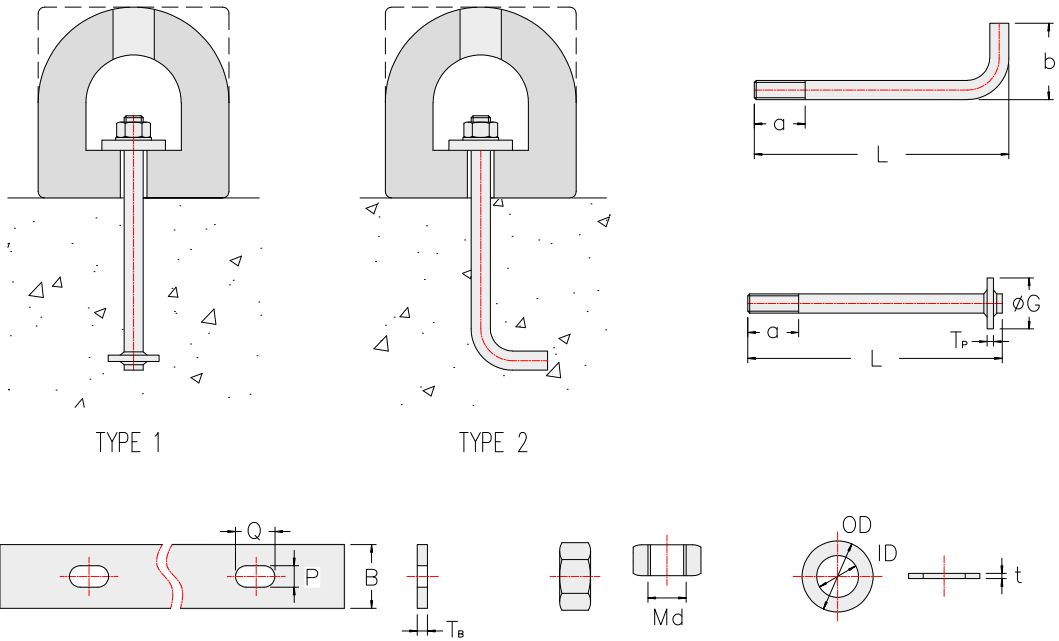
Note: The value specified in the above table is for reference only. The final drawing is subject to the data



规格 Specification	反力 R	吸能量 E
DC100	160	1.9
DC150	240	4.1
DC200	320	7.2
DC250	395	11.5
DC300	480	15.8
DC350	556	21.3
DC400	635	29
DC500	792	45

[Units: kN, kNm]

# 金属配件 Metal Accessories



规格 Specification	螺母、垫圈 Hex Nut & Washer				压板 Flat Bar			锚固螺栓 Anchor Bolt			地角板 Anchor plate	
	Md	OD	ID	t	B×T <sub>b</sub>	P	Q	a	b	L	T <sub>p</sub>	G
100H	M12	24	14	2.5	40×8	14	24	60	45	180	6-8	50
150H	M16	30	18	3	60×10	18	32	60	45	200	6-8	55
200H	M24	44	26	4	80×14	28	48	70	55	350	8-10	55
250H	M27	50	30	4	90×14	31	54	80	65	350	8-10	80
300H	M30	56	33	4	110×16	34	60	80	85	400	8-10	80
350H	M30	56	33	4	120×16	34	60	80	85	400	8-10	80
400H	M36	66	39	5	135×18	40	72	90	85	500	10-12	85
500H	M42	78	45	8	160×20	46	84	100	100	600	10-12	100

[Units: mm]

说明 以上表格信息仅供参考，配件根据实际需求选定；  
Note: 特殊配件及型号需求请联系我公司。

All accessory information is for guidance only.

Every chain design should be checked to confirm suitability for the intended application.

# DR 改良D型护舷

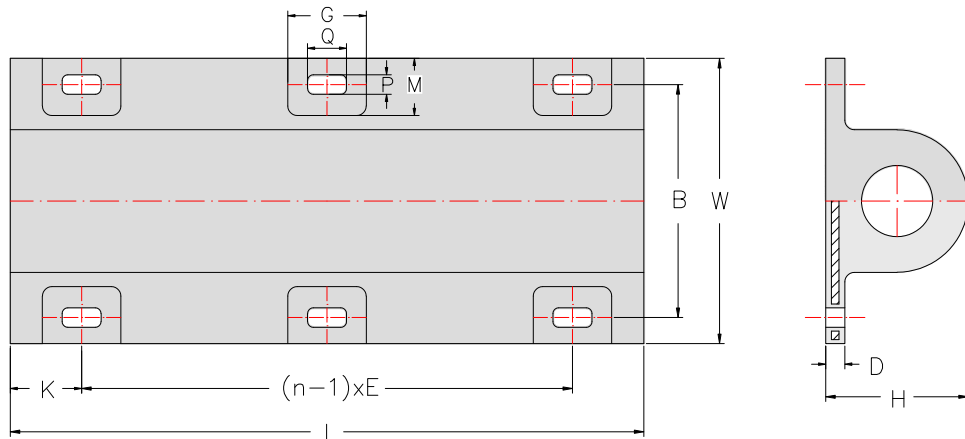
## Rubber Fenders

DR型橡胶护舷是在D型橡胶护舷基础上开发的一种新型护舷，产品加大了护舷底部宽度并预埋钢板骨架，采用双排螺栓固定，安装强度及使用寿命

DR Rubber Fenders is a new type of rubber fender developed from D type fender, it enlarge fender bottom width to get embedded steel frame plate inside and to be fix to the port structure with double row bolts, therefore it get stronger



### 护舷规格 Specification



规格 Specification	H	W	B	D	P	Q	G	M	重量 Weight (kg)
DR 280×540	280	540	430	40	41	82	165	120	125
DR 300×540	300	540	430	40	41	82	165	120	130
DR 300×600	300	600	490	40	41	82	165	120	144

规格 Specification	280×540 300×540 300×600				
L	1000	1500	2000	2500	3000
n	2	3	4	4	5
E	700	600	570	550	540
K	150	150	145	150	150

[Units: mm]

## 性能 Performance

规格 Specification		280H	300H
性能 Performance			
设计压缩量 Rated Deflection: 50%	R(kN)	375	495
	E(kNm)	14	20

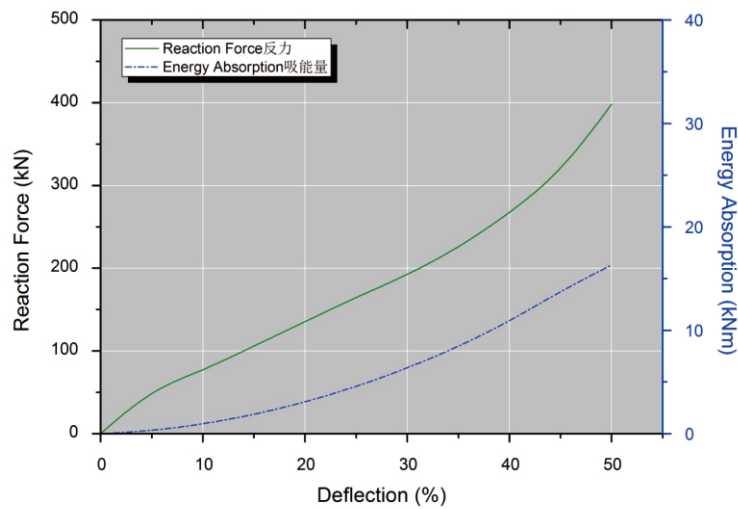
- 注  
Note:
- (1) R-反力, E-吸能 ; 设计压缩量50% ;
  - (2) 上述数据为每米性能, 其它长度护舷的力学性能, 在1000mm长度基础上乘长度的倍数 ;
  - (3) 性能公差:  $\pm 10\%$

R: Reaction Force, E: Energy Absorption.

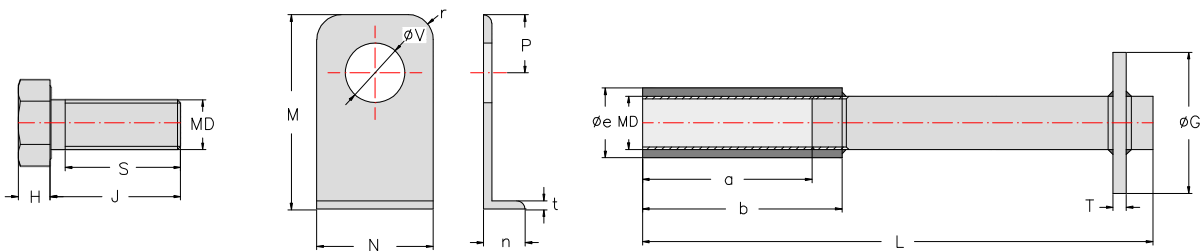
Rated Deflection: 50%

Performance tolerance:  $\pm 10\%$

The performance mentioned above is the performance for per meter length fender, Dynamic performance in



## 预埋件 Anchors



螺栓 Hex Bolt				垫片 L-Washer							预埋螺母 Anchor Nut			地角杆, 地角板 Anchor Rod, Plate		
MD	H	J	S	N	n	M	P	t	V	r	a	b	e	T	L	G
M36	23	95	80	119	22	126	62	6	43	25	85	125	49	10	360	85

[Units: mm]